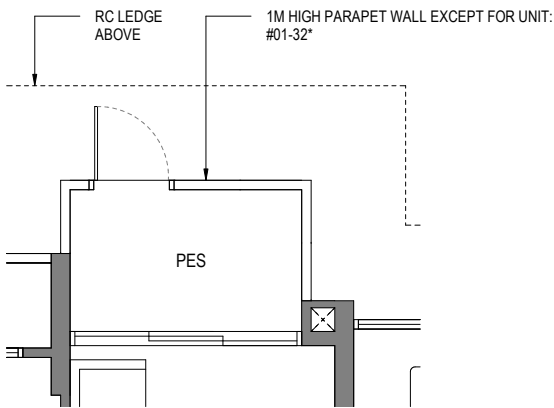


2 BEDROOM

TYPE B1-G

49 sq m/ 527 sq ft
INCLUSIVE OF 4 SQM PES

BLOCK	UNIT
813	#01-09 #01-16*
815	#01-17 #01-24*
817	#01-32*



APPLICABLE TO TYPE B1-G

TYPE B1

49 sq m/ 527 sq ft
INCLUSIVE OF 4 SQM BALCONY

BLOCK	UNIT
813	#02-09 TO #08-09 #11-09 TO #15-09 #18-09 TO #25-09 #02-16* TO #25-16*
815	#02-17 TO #12-17 #15-17 TO #19-17 #22-17 TO #25-17 #02-24* TO #25-24*
817	#02-32* TO #25-32*

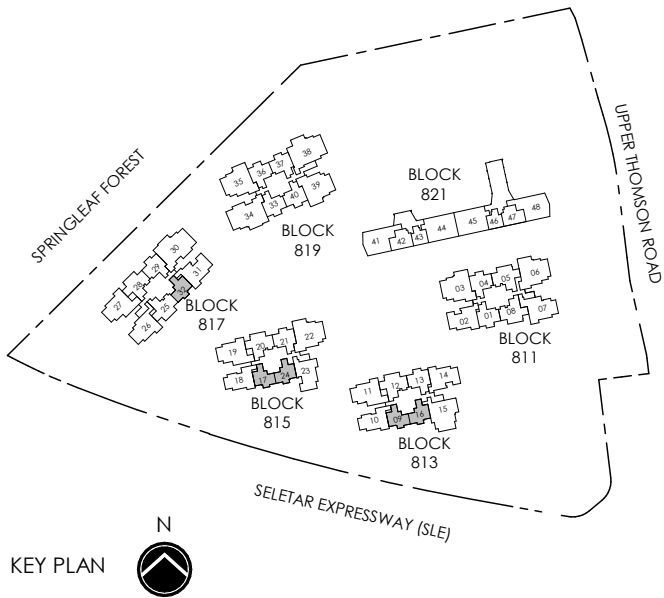


* MIRROR IMAGE



LEGEND (where applicable) :

F - Fridge	WD - Washer Dryer
P - Pantry	DB - Distribution Board
O - Oven	ST - Store
IH - Induction Hob	



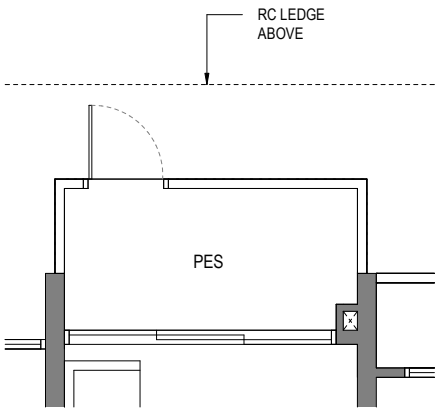
All plans are subjected to amendments as may be approved by the relevant authorities. Floor areas are approximate measurements and are subjected to final survey.
Building Plan CX ES No.: ES20250314-50002-CG01
Project Reference No.: A1709-A0050-2024
Dated: 18 July 2025

2 BEDROOM

TYPE B2-G

60 sq m/ 646 sq ft
INCLUSIVE OF 5 SQM PES

BLOCK	UNIT
811	#01-01
813	#01-13
815	#01-21
817	#01-29
819	#01-33
	#01-36*
	#01-37
	#01-40*



APPLICABLE TO TYPE B2-G

TYPE B2

60 sq m/ 646 sq ft
INCLUSIVE OF 5 SQM BALCONY

BLOCK	UNIT
811	#02-01 TO #25-01
	#03-04* TO #25-04*
813	#02-13 TO #25-13
815	#02-21 TO #25-21
817	#02-29 TO #25-29
819	#02-33 TO #25-33
	#02-36* TO #25-36*
	#02-37 TO #08-37
	#11-37 TO #15-37
	#18-37 TO #25-37
	#02-40* TO #08-40*
	#11-40* TO #15-40*
	#18-40* TO #25-40*

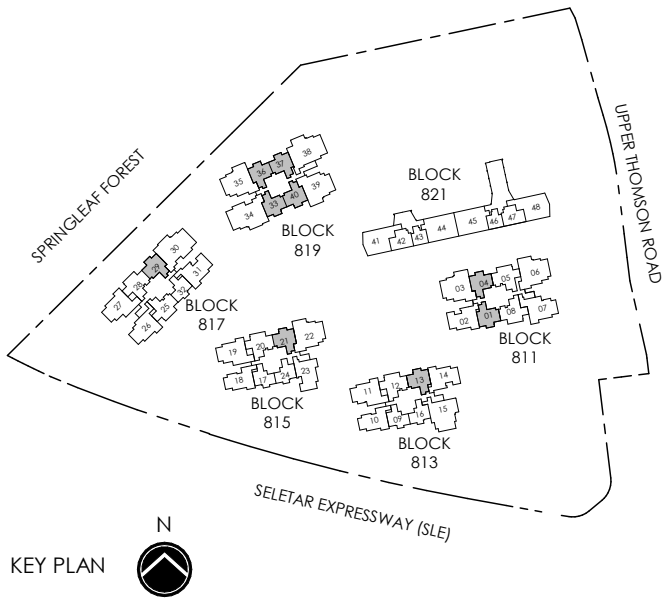


* MIRROR IMAGE



LEGEND (where applicable) :

F - Fridge	WD - Washer Dryer
P - Pantry	DB - Distribution Board
O - Oven	ST - Store
IH - Induction Hob	



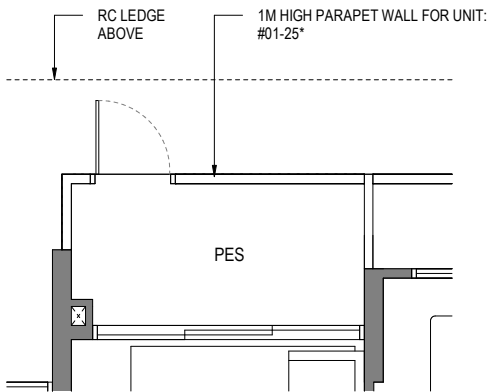
All plans are subjected to amendments as may be approved by the relevant authorities. Floor areas are approximate measurements and are subjected to final survey.
Building Plan CX ES No.: ES20250314-50002-CG01
Project Reference No.: A1709-A0050-2024
Dated: 18 July 2025

3 BEDROOM

TYPE C1-G

73 sq m/ 786 sq ft
INCLUSIVE OF 5 SQM PES

BLOCK	UNIT
811	#01-08
813	#01-12
815	#01-20
817	#01-25* #01-28



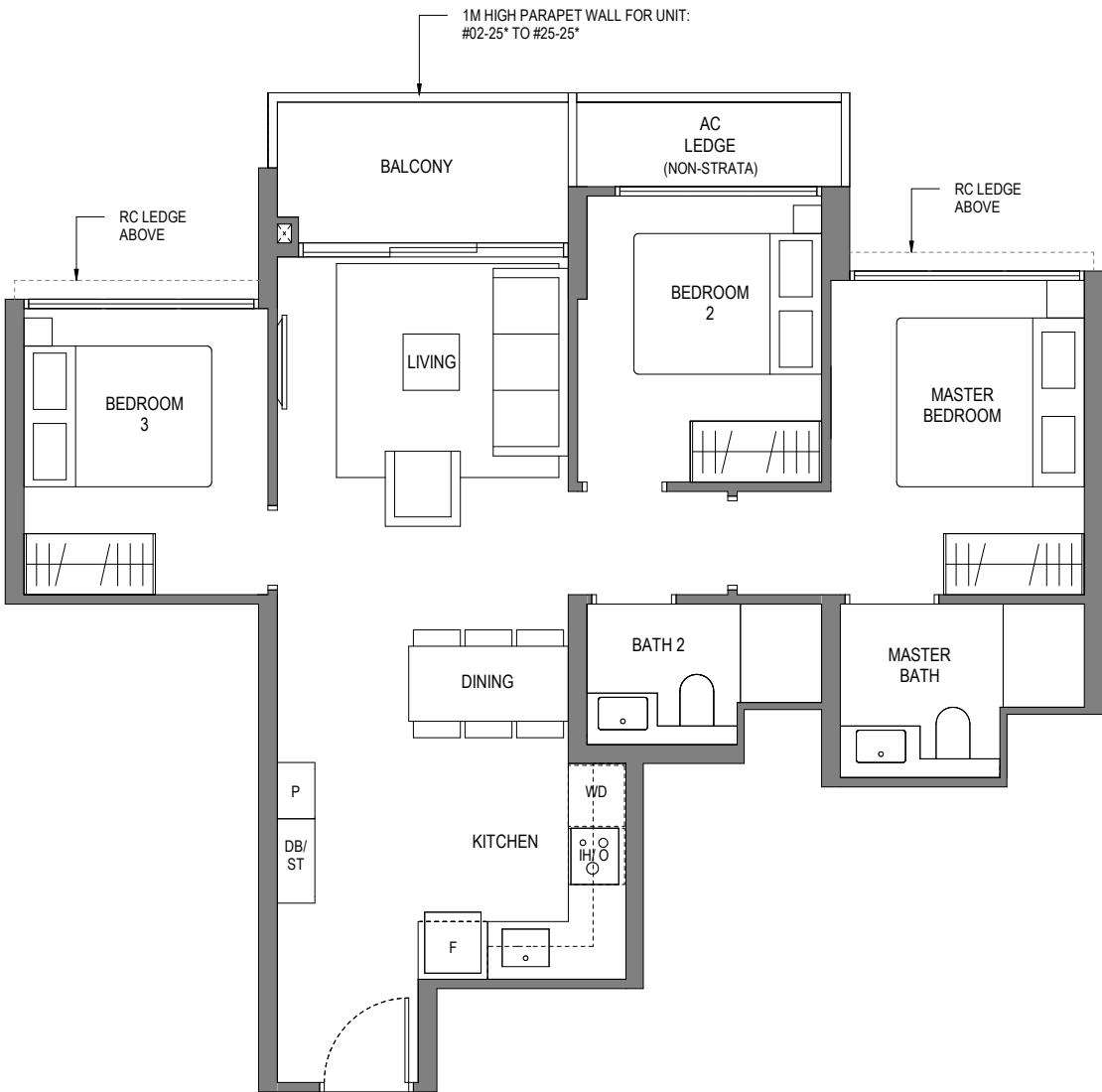
APPLICABLE TO TYPE C1-G

TYPE C1

73 sq m/ 786 sq ft
INCLUSIVE OF 5 SQM BALCONY

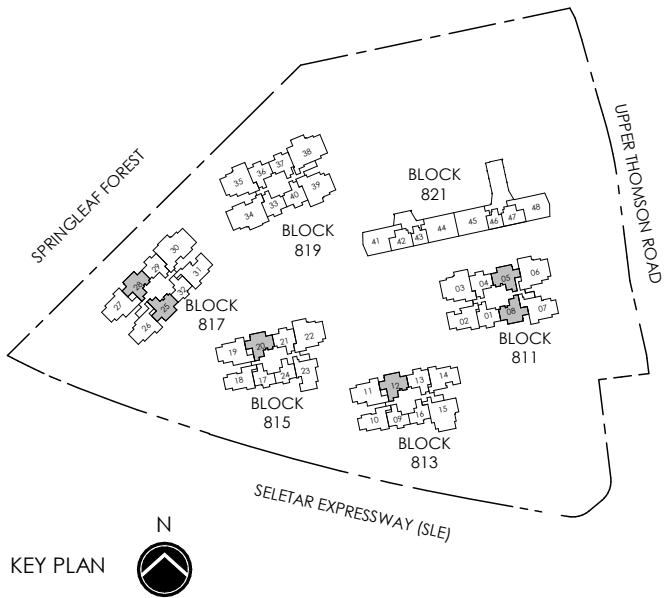
BLOCK	UNIT
811	#03-05* TO #08-05* #11-05* TO #15-05* #18-05* TO #25-05*
813	#02-08 TO #08-08 #11-08 TO #15-08 #18-08 TO #25-08
815	#02-12 TO #08-12 #11-12 TO #15-12 #18-12 TO #25-12
817	#02-20 TO #12-20 #15-20 TO #19-20 #22-20 TO #25-20 #02-25* TO #08-25* #11-25* TO #15-25* #18-25* TO #25-25* #02-28 TO #08-28 #11-28 TO #15-28 #18-28 TO #25-28

* MIRROR IMAGE



LEGEND (where applicable) :

F - Fridge	WD - Washer Dryer
P - Pantry	DB - Distribution Board
O - Oven	ST - Store
IH - Induction Hob	



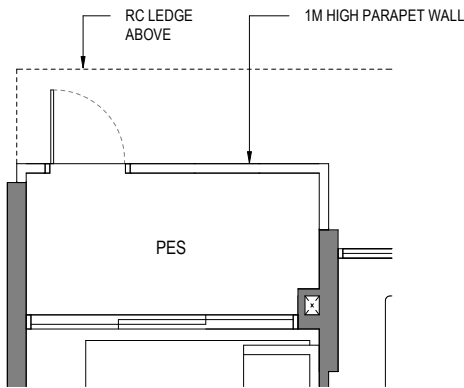
All plans are subjected to amendments as may be approved by the relevant authorities. Floor areas are approximate measurements and are subjected to final survey.
Building Plan CX ES No.: ES20250314-50002-CG01
Project Reference No.: A1709-A0050-2024
Dated: 18 July 2025

3 BEDROOM

TYPE C2-G

76 sq m/ 818 sq ft
INCLUSIVE OF 5 SQM PES

BLOCK	UNIT
813	#01-10

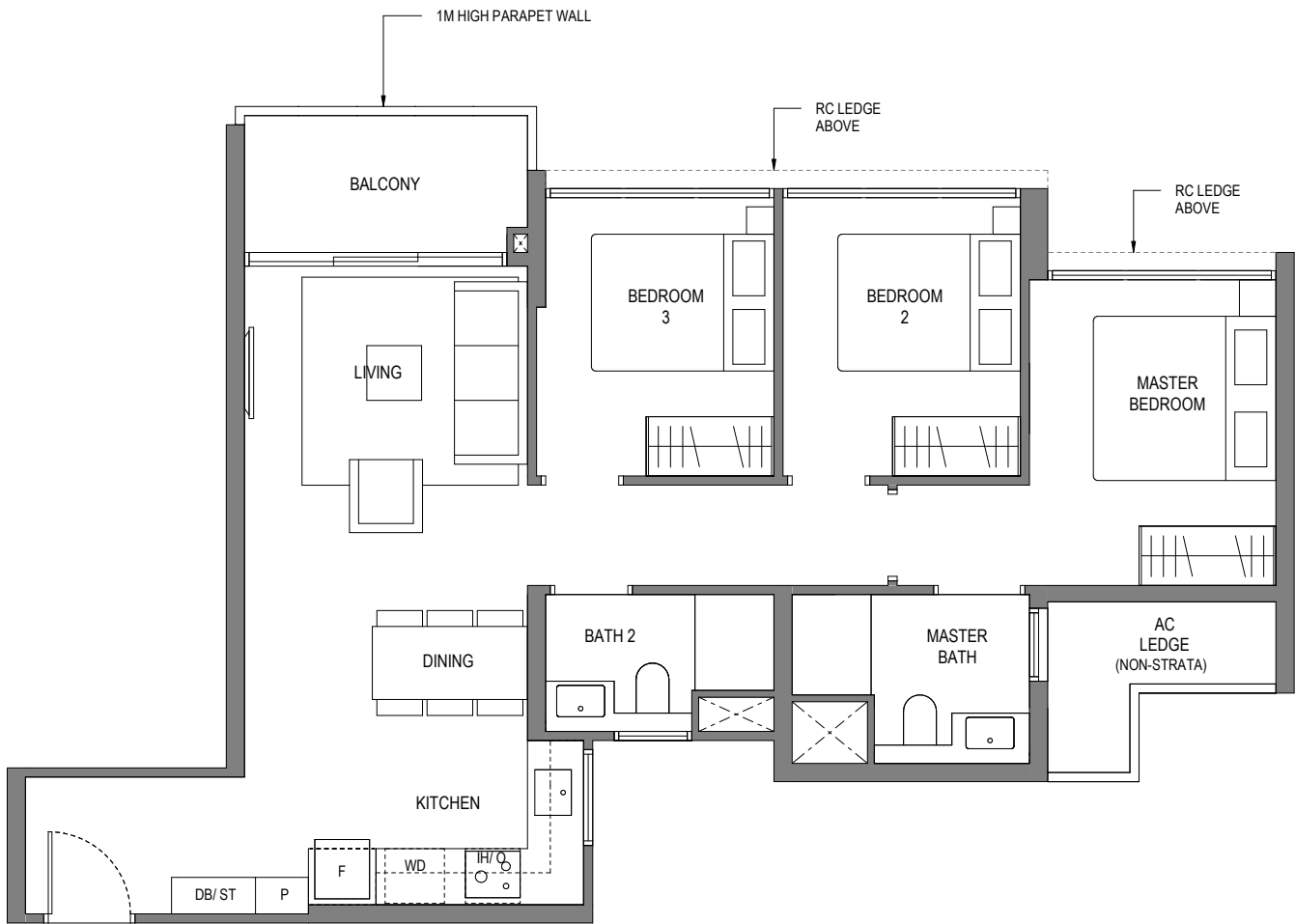


APPLICABLE TO TYPE C2-G

TYPE C2

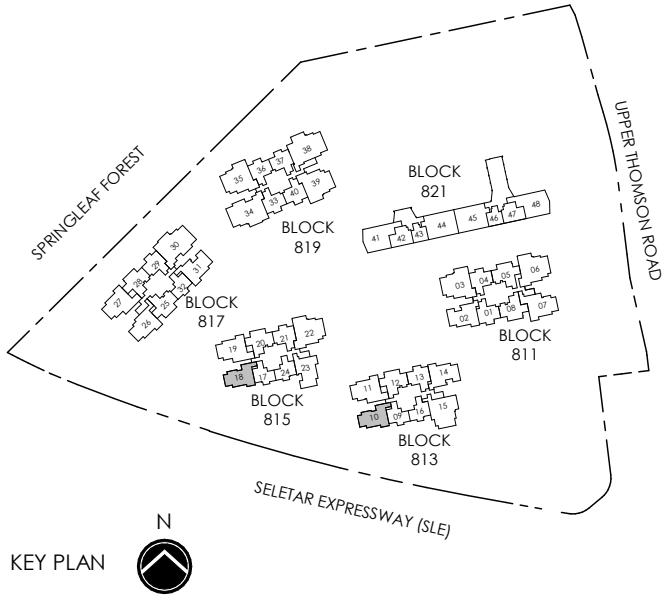
76 sq m/ 818 sq ft
INCLUSIVE OF 5 SQM BALCONY

BLOCK	UNIT
813	#02-10 TO #08-10 #11-10 TO #15-10 #18-10 TO #25-10
815	#03-18 TO #12-18 #15-18 TO #19-18 #22-18 TO #25-18



LEGEND (where applicable) :

F - Fridge	WD - Washer Dryer
P - Pantry	DB - Distribution Board
O - Oven	ST - Store
IH - Induction Hob	



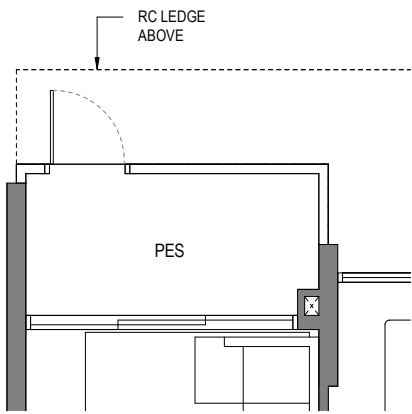
All plans are subjected to amendments as may be approved by the relevant authorities. Floor areas are approximate measurements and are subjected to final survey.
Building Plan CX ES No.: ES20250314-50002-CG01
Project Reference No.: A1709-A0050-2024
Dated: 18 July 2025

3 BEDROOM

TYPE C3-G

84 sq m/ 904 sq ft
INCLUSIVE OF 5 SQM PES

BLOCK	UNIT
811	#01-02
813	#01-14



APPLICABLE TO TYPE C3-G

TYPE C3

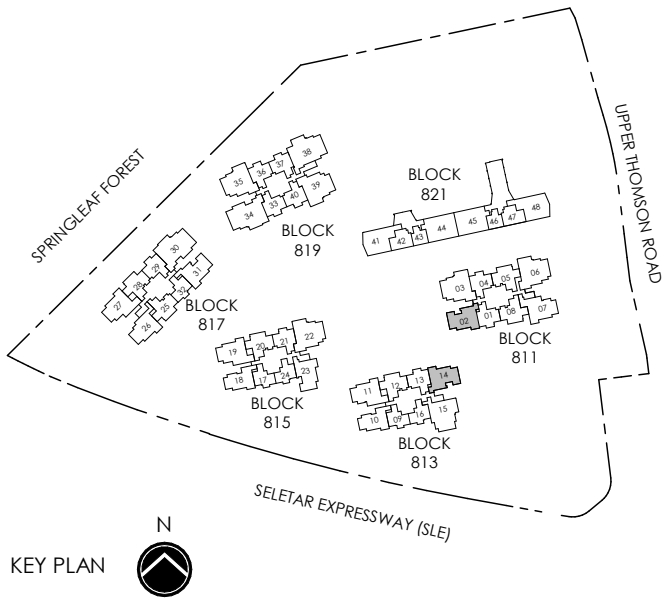
84 sq m/ 904 sq ft
INCLUSIVE OF 5 SQM BALCONY

BLOCK	UNIT
811	#02-02 TO #25-02
813	#02-14 TO #25-14



LEGEND (where applicable) :

F - Fridge	WD - Washer Dryer
P - Pantry	DB - Distribution Board
O - Oven	ST - Store
GH - Gas Hob	



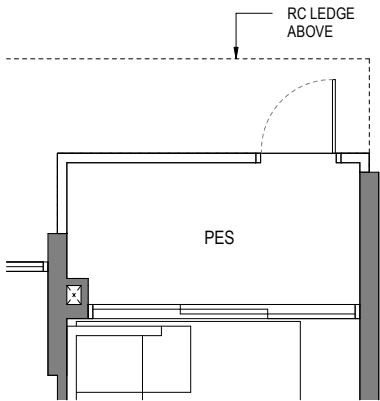
All plans are subjected to amendments as may be approved by the relevant authorities. Floor areas are approximate measurements and are subjected to final survey.
Building Plan CX ES No.: ES20250314-50002-CG01
Project Reference No.: A1709-A0050-2024
Dated: 18 July 2025

3 BEDROOM

TYPE C4-G

86 sq m/ 926 sq ft
INCLUSIVE OF 5 SQM PES

BLOCK	UNIT
817	#01-31



APPLICABLE TO TYPE C4-G

TYPE C4

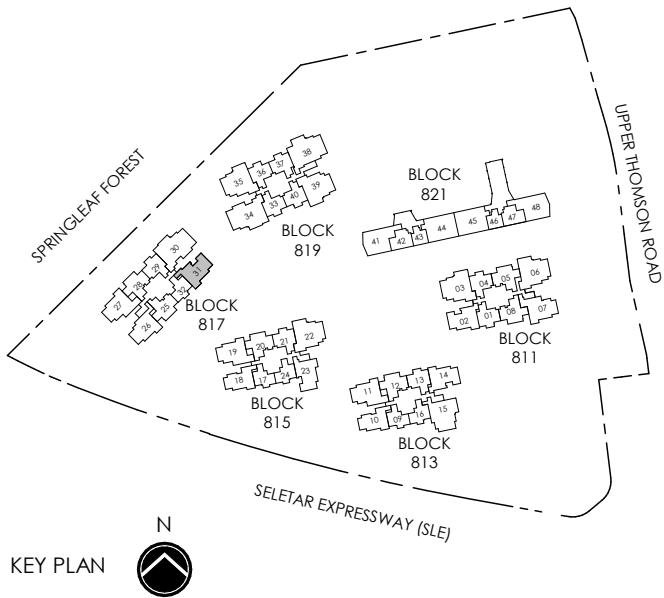
86 sq m/ 926 sq ft
INCLUSIVE OF 5 SQM BALCONY

BLOCK	UNIT
817	#02-31 TO #25-31



LEGEND (where applicable) :

F - Fridge	WD - Washer Dryer
P - Pantry	DB - Distribution Board
O - Oven	ST - Store
GH - Gas Hob	



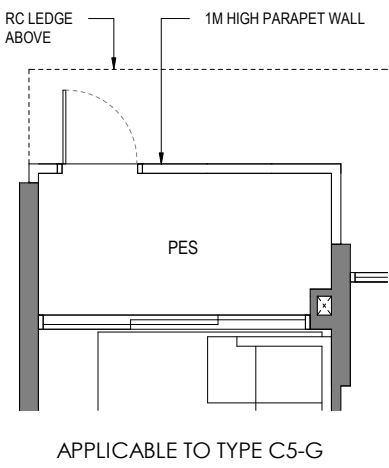
All plans are subjected to amendments as may be approved by the relevant authorities. Floor areas are approximate measurements and are subjected to final survey.
Building Plan CX ES No.: ES20250314-50002-CG01
Project Reference No.: A1709-A0050-2024
Dated: 18 July 2025

3 BEDROOM

TYPE C5-G

86 sq m/ 926 sq ft
INCLUSIVE OF 5 SQM PES

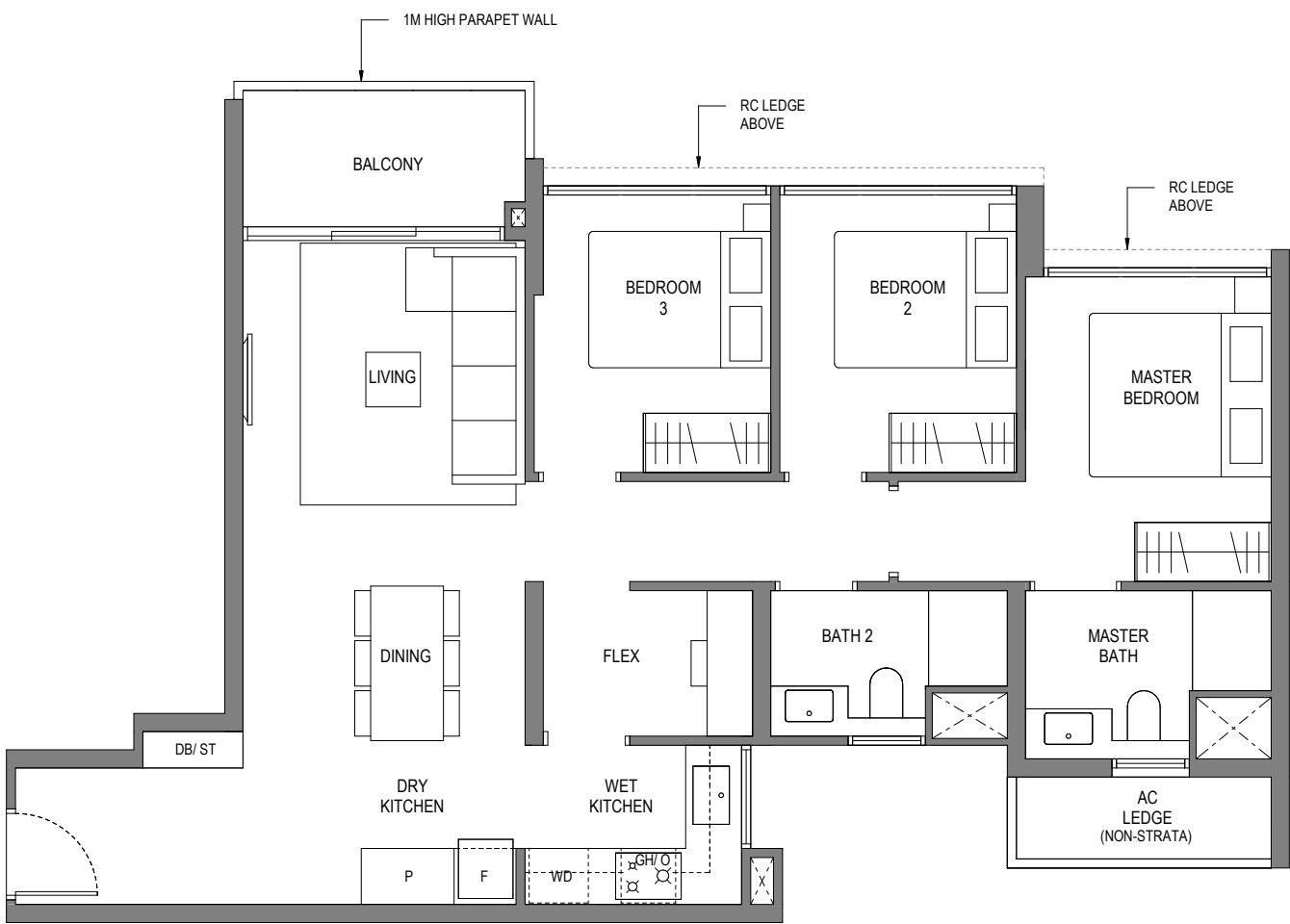
BLOCK	UNIT
815	#01-23



TYPE C5

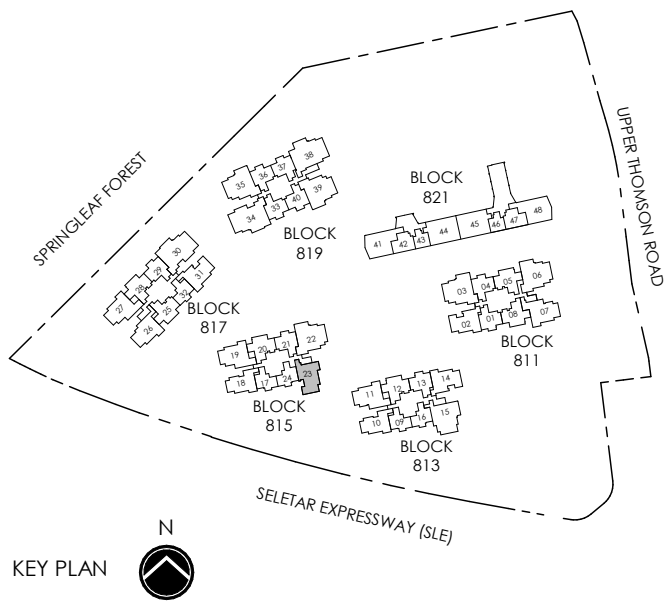
86 sq m/ 926 sq ft
INCLUSIVE OF 5 SQM BALCONY

BLOCK	UNIT
815	#02-23 TO #25-23



LEGEND (where applicable) :

F - Fridge	WD - Washer Dryer
P - Pantry	DB - Distribution Board
O - Oven	ST - Store
GH - Gas Hob	



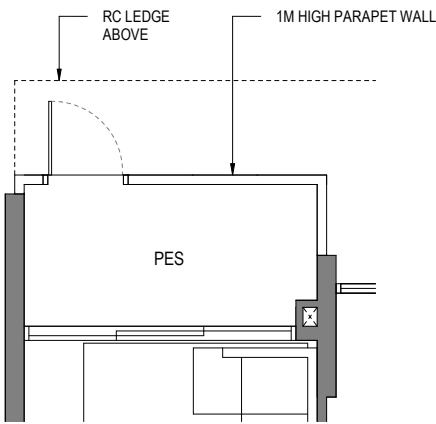
All plans are subjected to amendments as may be approved by the relevant authorities. Floor areas are approximate measurements and are subjected to final survey.
Building Plan CX ES No.: ES20250314-50002-CG01
Project Reference No.: A1709-A0050-2024
Dated: 18 July 2025

3 BEDROOM

TYPE C6-G

89 sq m/ 958 sq ft
INCLUSIVE OF 5 SQM PES

BLOCK	UNIT
817	#01-26



APPLICABLE TO TYPE C6-G

TYPE C6

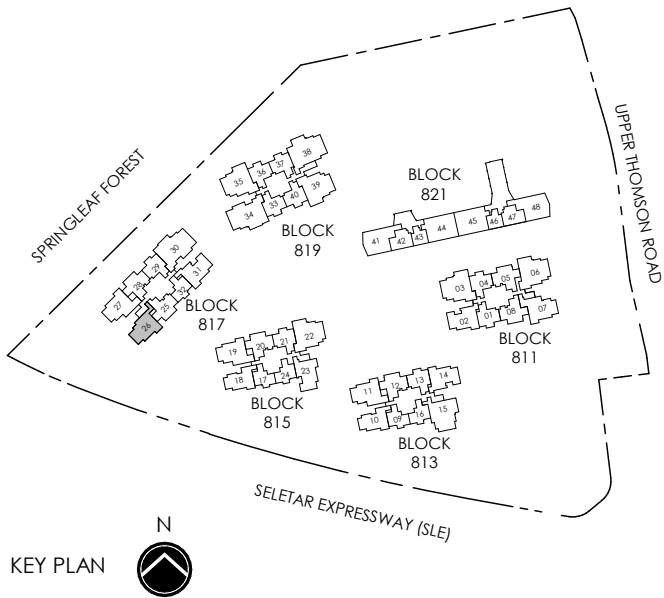
89 sq m/ 958 sq ft
INCLUSIVE OF 5 SQM BALCONY

BLOCK	UNIT
817	#02-26 TO #08-26
	#11-26 TO #15-26
	#18-26 TO #25-26



LEGEND (where applicable) :

F - Fridge	WD - Washer Dryer
P - Pantry	DB - Distribution Board
O - Oven	ST - Store
GH - Gas Hob	



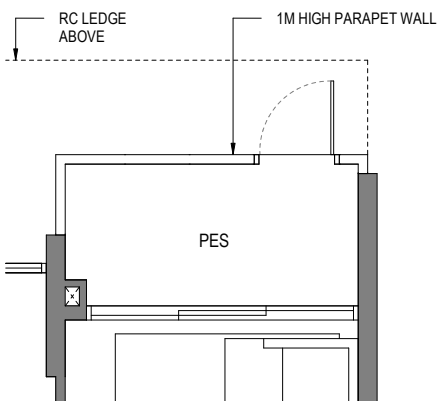
All plans are subjected to amendments as may be approved by the relevant authorities. Floor areas are approximate measurements and are subjected to final survey.
Building Plan CX ES No.: ES20250314-50002-CG01
Project Reference No.: A1709-A0050-2024
Dated: 18 July 2025

3 BEDROOM

TYPE C7-G

95 sq m/ 1023 sq ft
INCLUSIVE OF 5 SQM PES

BLOCK	UNIT
813	#01-11
817	#01-27



APPLICABLE TO TYPE C7-G

TYPE C7

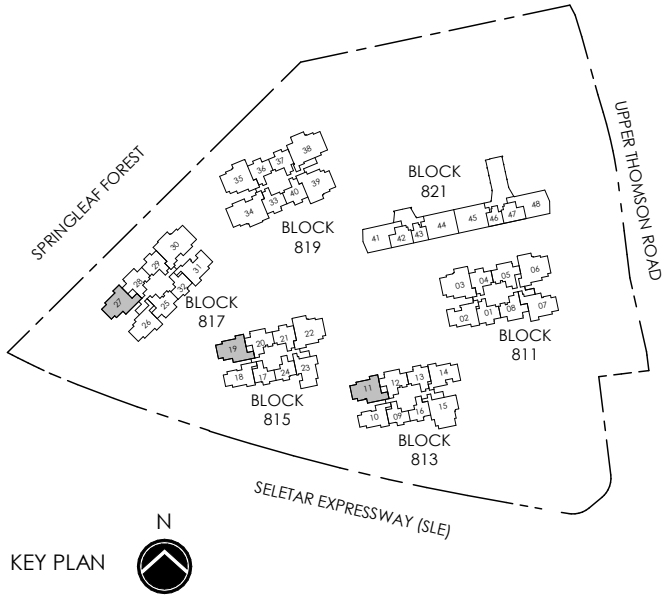
95 sq m/ 1023 sq ft
INCLUSIVE OF 5 SQM BALCONY

BLOCK	UNIT
813	#02-11 TO #08-11 #11-11 TO #15-11 #18-11 TO #25-11
815	#02-19 TO #12-19 #15-19 TO #19-19 #22-19 TO #25-19
817	#02-27 TO #08-27 #11-27 TO #15-27 #18-27 TO #25-27



LEGEND (where applicable) :

F - Fridge	WD - Washer Dryer
P - Pantry	DB - Distribution Board
O - Oven	ST - Store
GH - Gas Hob	



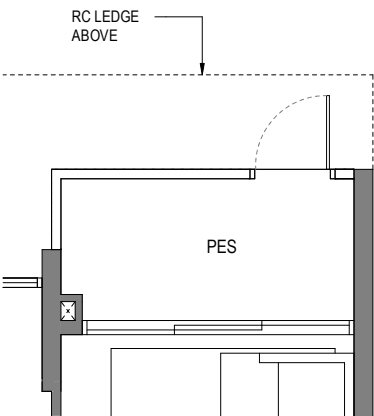
All plans are subjected to amendments as may be approved by the relevant authorities. Floor areas are approximate measurements and are subjected to final survey.
Building Plan CX ES No.: ES20250314-50002-CG01
Project Reference No.: A1709-A0050-2024
Dated: 18 July 2025

3 BEDROOM

TYPE C8-G

100 sq m/ 1076 sq ft
INCLUSIVE OF 5 SQM PES

BLOCK	UNIT
811	#01-07



APPLICABLE TO TYPE C8-G

TYPE C8

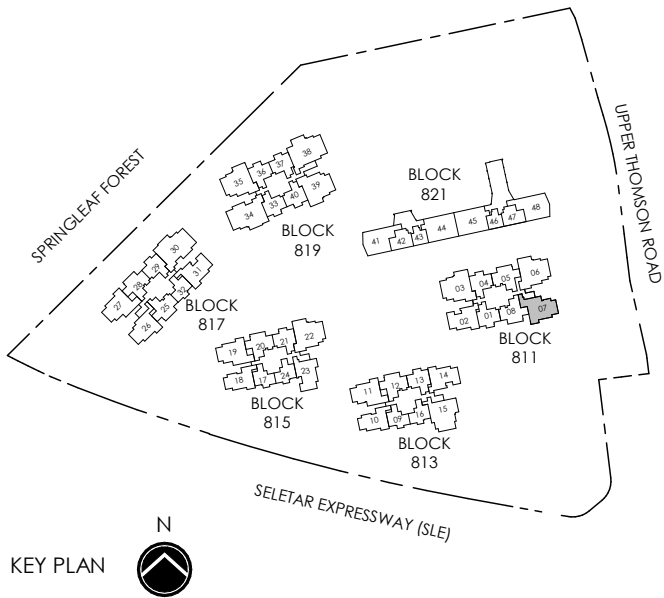
100 sq m/ 1076 sq ft
INCLUSIVE OF 5 SQM BALCONY

BLOCK	UNIT
811	#02-07 TO #08-07 #11-07 TO #15-07 #18-07 TO #25-07



LEGEND (where applicable) :

F - Fridge	WD - Washer Dryer
P - Pantry	DB - Distribution Board
O - Oven	ST - Store
GH - Gas Hob	



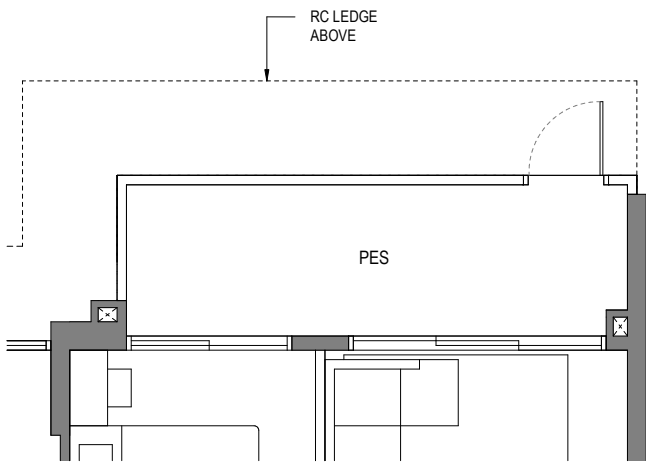
All plans are subjected to amendments as may be approved by the relevant authorities. Floor areas are approximate measurements and are subjected to final survey.
Building Plan CX ES No.: ES20250314-50002-CG01
Project Reference No.: A1709-A0050-2024
Dated: 18 July 2025

4 BEDROOM

TYPE D1-G

114 sq m/ 1227 sq ft
INCLUSIVE OF 9 SQM PES

BLOCK	UNIT
815	#01-22*
819	#01-35 #01-39



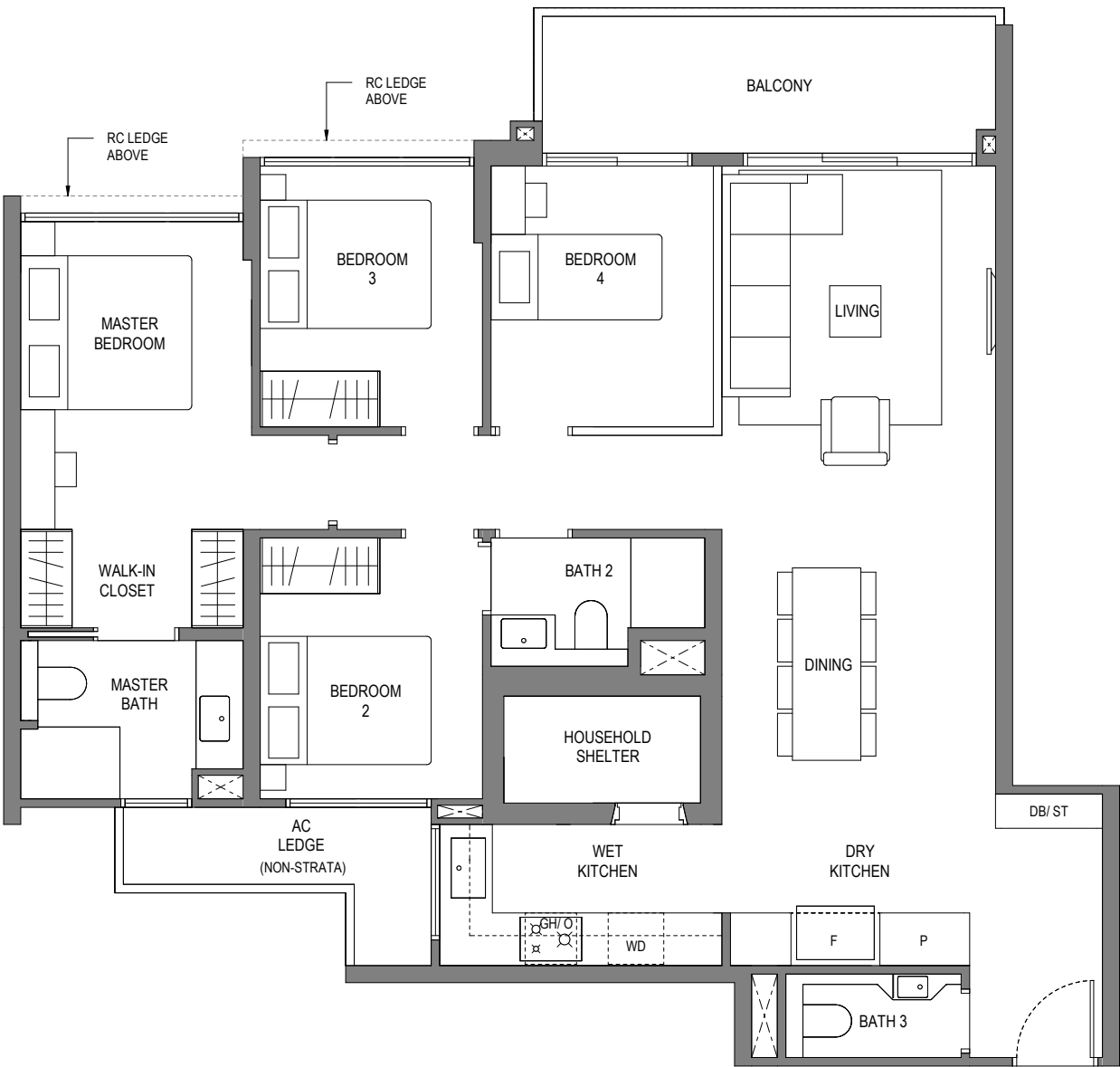
APPLICABLE TO TYPE D1-G

TYPE D1

114 sq m/ 1227 sq ft
INCLUSIVE OF 9 SQM BALCONY

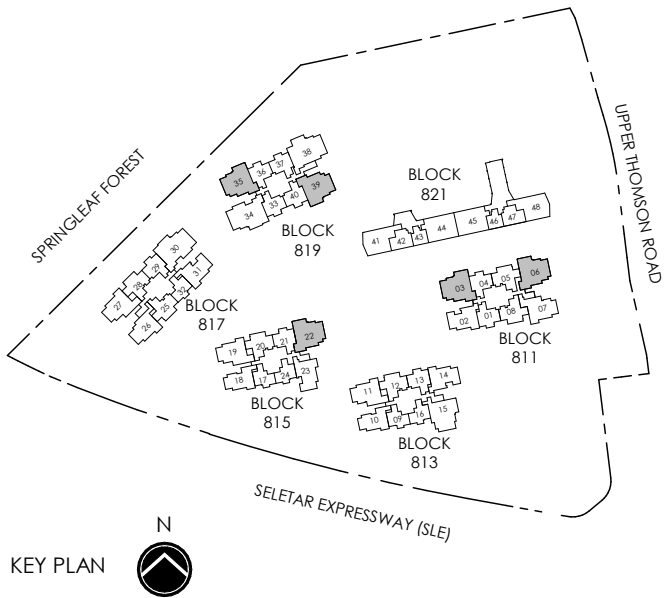
BLOCK	UNIT
811	#03-03 TO #25-03 #03-06* TO #08-06* #11-06* TO #15-06* #18-06* TO #25-06*
815	#02-22* TO #25-22*
819	#02-35 TO #25-35 #02-39 TO #08-39 #11-39 TO #15-39 #18-39 TO #25-39

* MIRROR IMAGE



LEGEND (where applicable) :

F - Fridge	WD - Washer Dryer
P - Pantry	DB - Distribution Board
O - Oven	ST - Store
GH - Gas Hob	



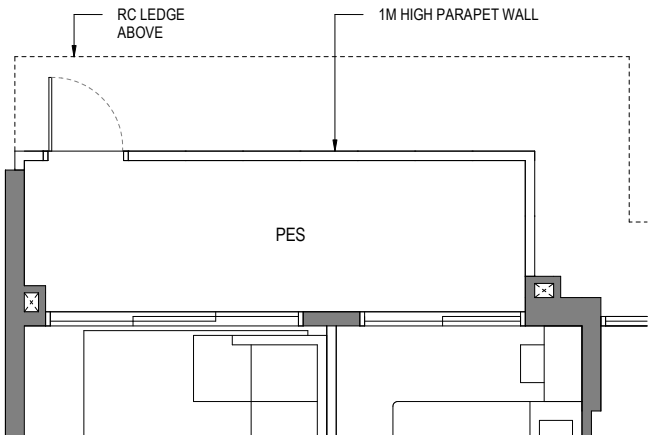
All plans are subjected to amendments as may be approved by the relevant authorities. Floor areas are approximate measurements and are subjected to final survey.
Building Plan CX ES No.: ES20250314-50002-CG01
Project Reference No.: A1709-A0050-2024
Dated: 18 July 2025

4 BEDROOM

TYPE D2-G

114 sq m/ 1227 sq ft
INCLUSIVE OF 9 SQM PES

BLOCK UNIT
813 #01-15

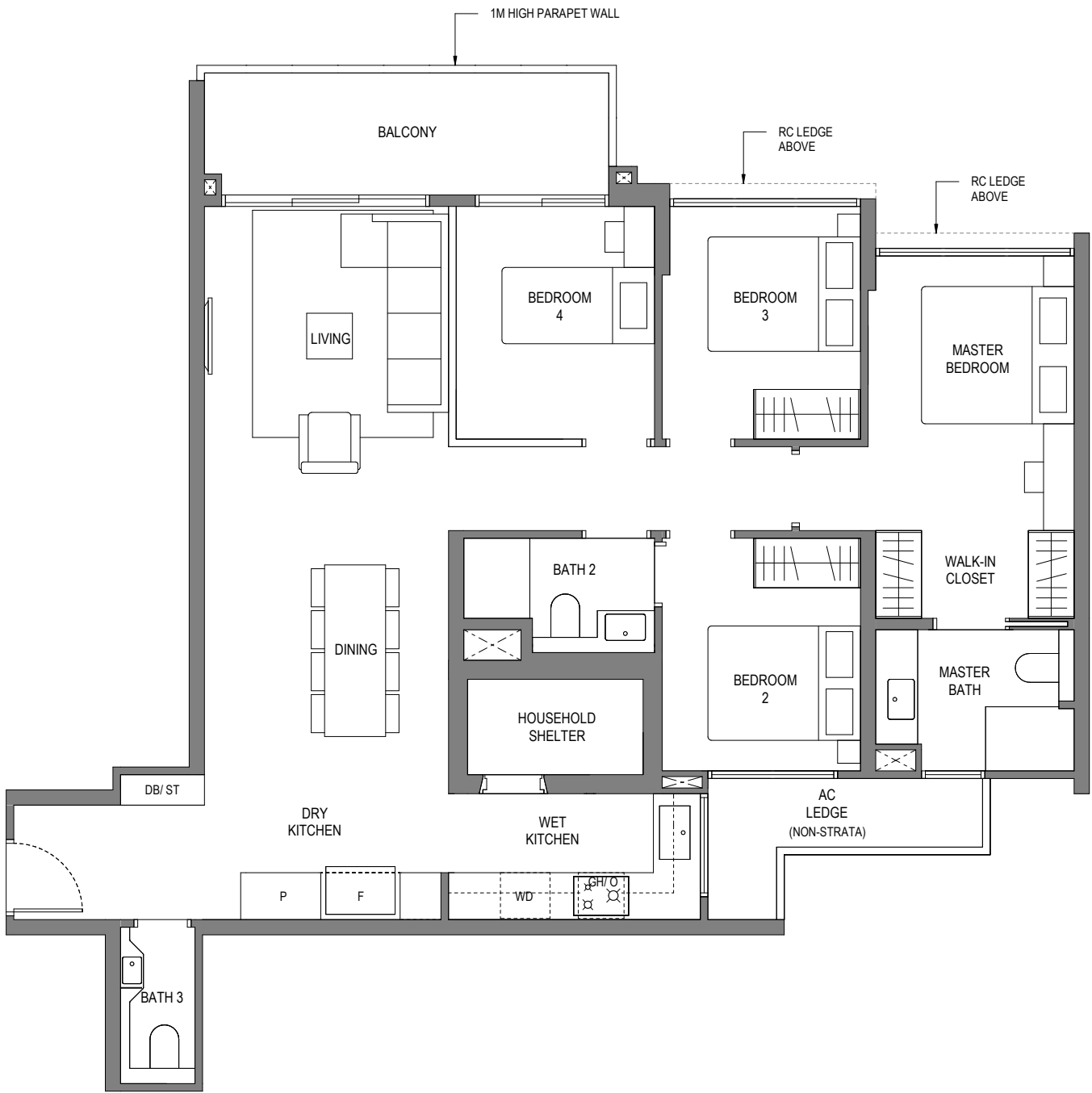


APPLICABLE TO TYPE D2-G

TYPE D2

114 sq m/ 1227 sq ft
INCLUSIVE OF 9 SQM BALCONY

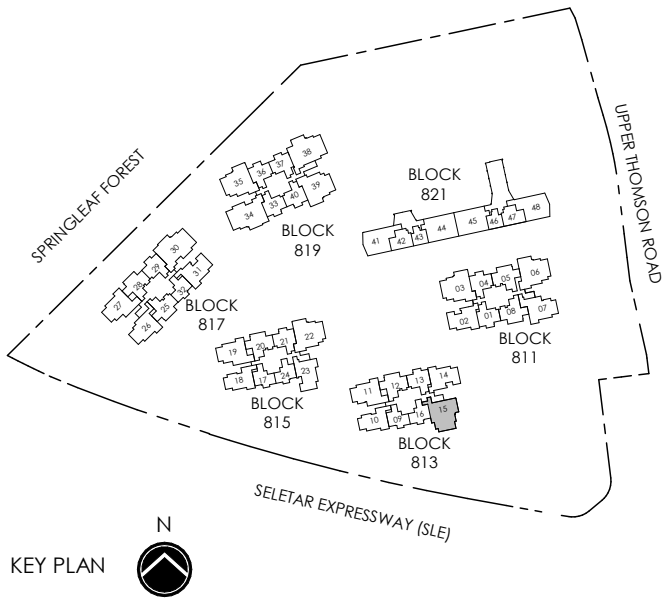
BLOCK UNIT
813 #02-15 TO #25-15



0 1 3 5m

LEGEND (where applicable) :

- | | |
|--------------|-------------------------|
| F - Fridge | WD - Washer Dryer |
| P - Pantry | DB - Distribution Board |
| O - Oven | ST - Store |
| GH - Gas Hob | |



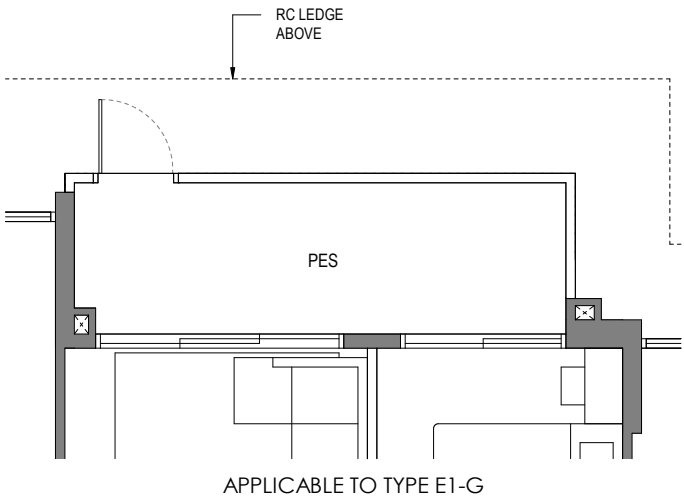
All plans are subjected to amendments as may be approved by the relevant authorities. Floor areas are approximate measurements and are subjected to final survey.
Building Plan CX ES No.: ES20250314-50002-CG01
Project Reference No.: A1709-A0050-2024
Dated: 18 July 2025

5 BEDROOM

TYPE E1-G

135 sq m/ 1453 sq ft
INCLUSIVE OF 9 SQM PES

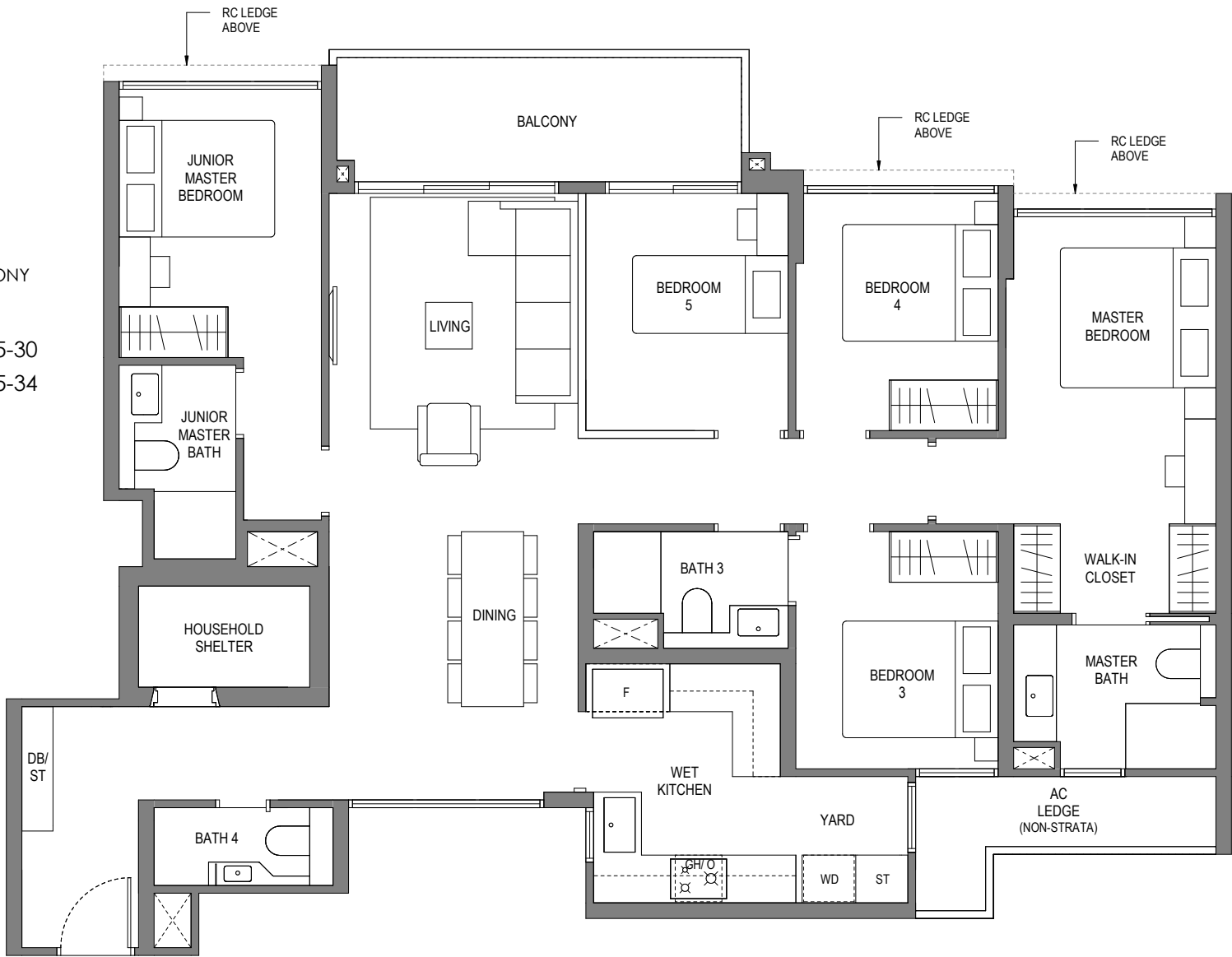
BLOCK	UNIT
817	#01-30
819	#01-34



TYPE E1

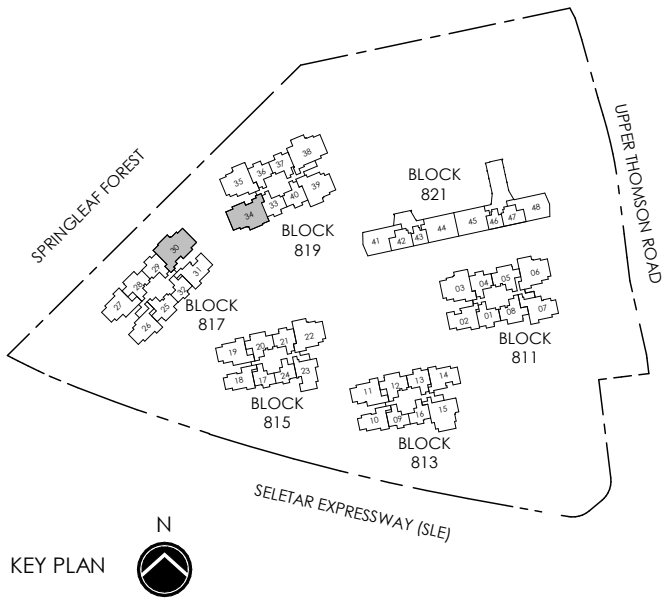
135 sq m/ 1453 sq ft
INCLUSIVE OF 9 SQM BALCONY

BLOCK	UNIT
817	#02-30 TO #25-30
819	#02-34 TO #25-34



LEGEND (where applicable) :

F - Fridge	WD - Washer Dryer
GH - Gas Hob	DB - Distribution Board
O - Oven	ST - Store



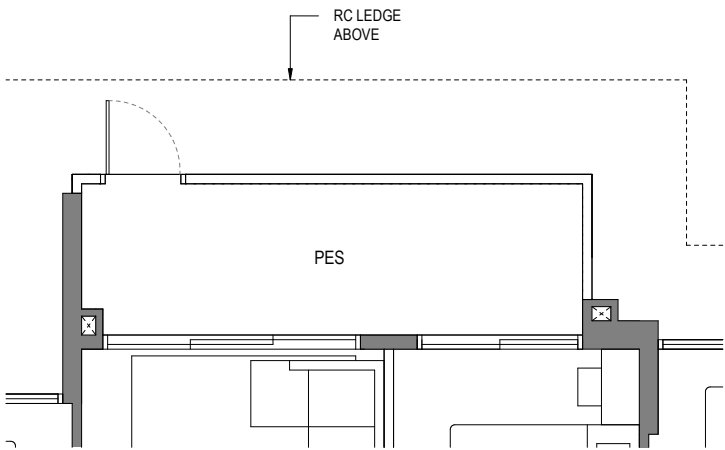
All plans are subjected to amendments as may be approved by the relevant authorities. Floor areas are approximate measurements and are subjected to final survey.
Building Plan CX ES No.: ES20250314-50002-CG01
Project Reference No.: A1709-A0050-2024
Dated: 18 July 2025

5 BEDROOM

TYPE E2-G

137 sq m/ 1475 sq ft
INCLUSIVE OF 9 SQM PES

BLOCK	UNIT
819	#01-38



APPLICABLE TO TYPE E2-G

TYPE E2

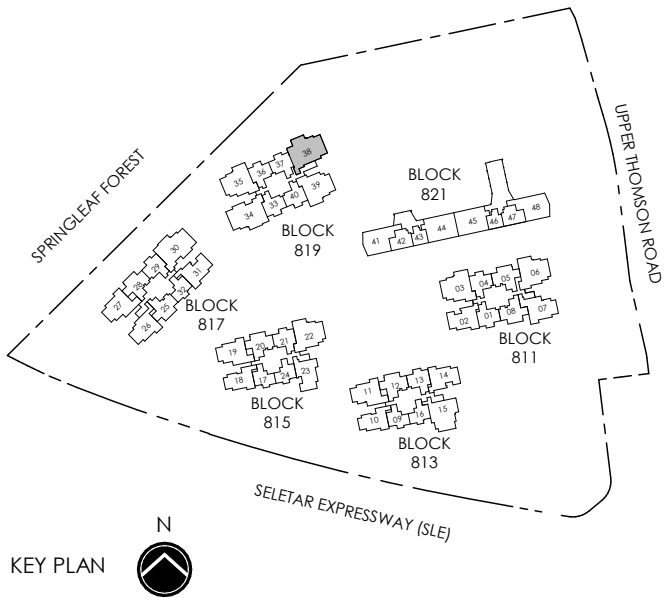
137 sq m/ 1475 sq ft
INCLUSIVE OF 9 SQM BALCONY

BLOCK	UNIT
819	#02-38 TO #08-38 #11-38 TO #15-38 #18-38 TO #25-38



LEGEND (where applicable) :

F - Fridge	WD - Washer Dryer
GH - Gas Hob	DB - Distribution Board
O - Oven	ST - Store



All plans are subjected to amendments as may be approved by the relevant authorities. Floor areas are approximate measurements and are subjected to final survey.
Building Plan CX ES No.: ES20250314-50002-CG01
Project Reference No.: A1709-A0050-2024
Dated: 18 July 2025

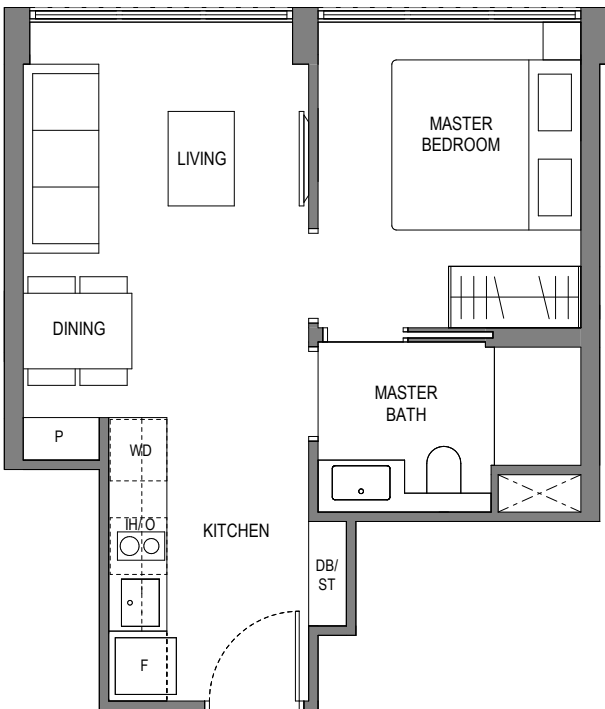
1 BEDROOM

TYPE AC1

36 sq m/ 388 sq ft

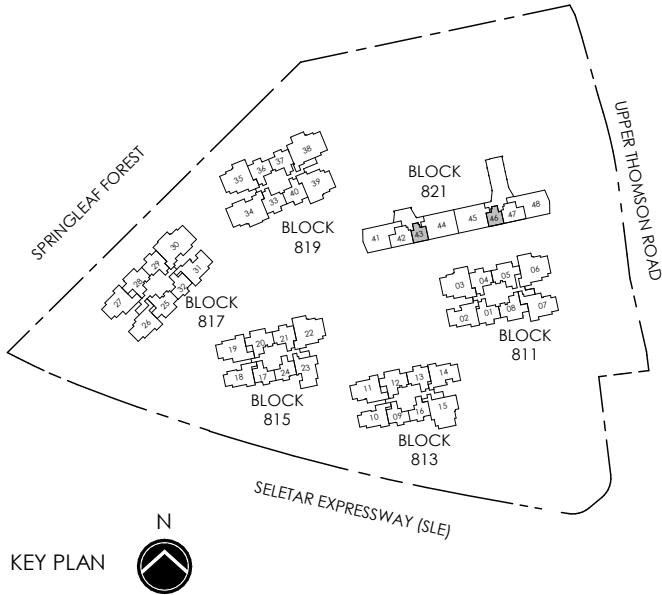
BLOCK	UNIT
821	#01-43* TO #04-43*
	#01-46 TO #04-46

* MIRROR IMAGE



LEGEND (where applicable) :

F - Fridge	WD - Washer Dryer
P - Pantry	DB - Distribution Board
O - Oven	ST - Store
IH - Induction Hob	



All plans are subjected to amendments as may be approved by the relevant authorities. Floor areas are approximate measurements and are subjected to final survey.
Building Plan CX ES No.: ES20250314-50002-CG01
Project Reference No.: A1709-A0050-2024
Dated: 18 July 2025

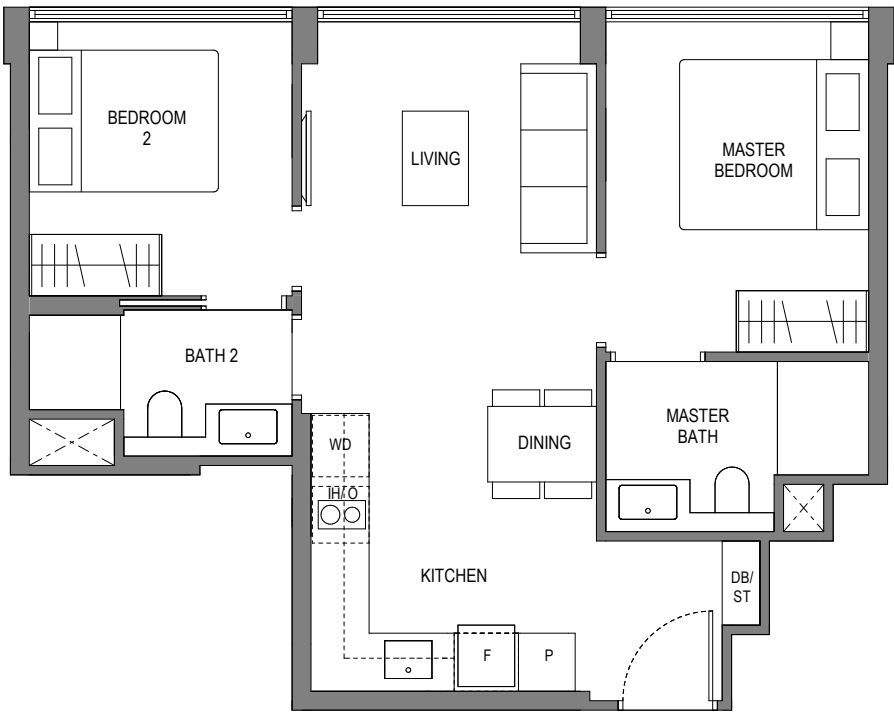
2 BEDROOM

TYPE BC1

55 sq m/ 592 sq ft

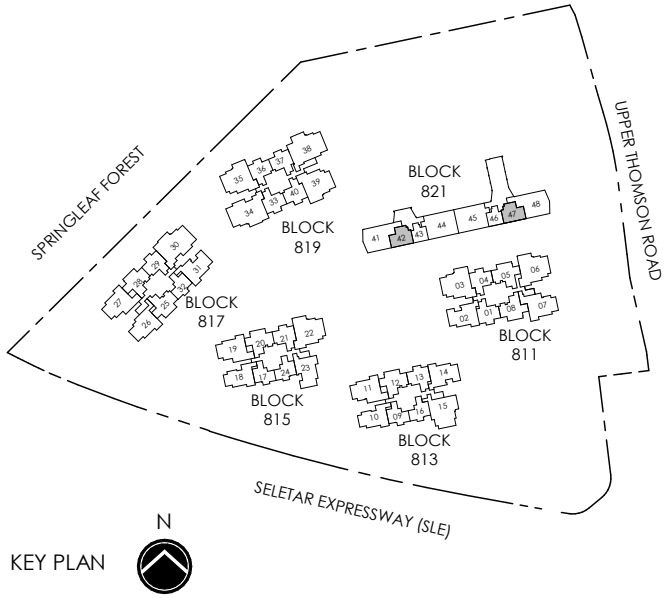
BLOCK	UNIT
821	#01-42* TO #04-42*
	#01-47 TO #04-47

* MIRROR IMAGE



LEGEND (where applicable) :

F - Fridge	WD - Washer Dryer
P - Pantry	DB - Distribution Board
O - Oven	ST - Store
IH - Induction Hob	



All plans are subjected to amendments as may be approved by the relevant authorities. Floor areas are approximate measurements and are subjected to final survey.
Building Plan CX ES No.: ES20250314-50002-CG01
Project Reference No.: A1709-A0050-2024
Dated: 18 July 2025

3 BEDROOM

TYPE CC1

104 sq m/ 1119 sq ft

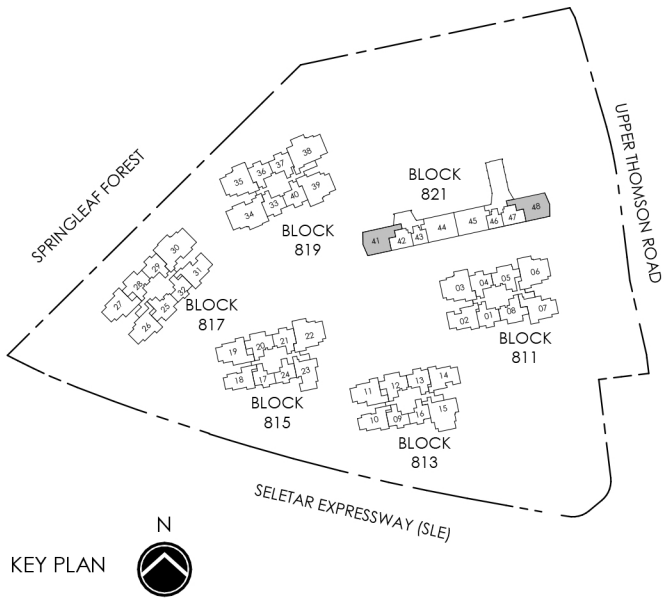
BLOCK	UNIT
821	#01-41* TO #04-41*
	#01-48 TO #04-48

* MIRROR IMAGE



LEGEND (where applicable) :

F - Fridge	WD - Washer Dryer
GH - Gas Hob	DB - Distribution Board
O - Oven	ST - Store



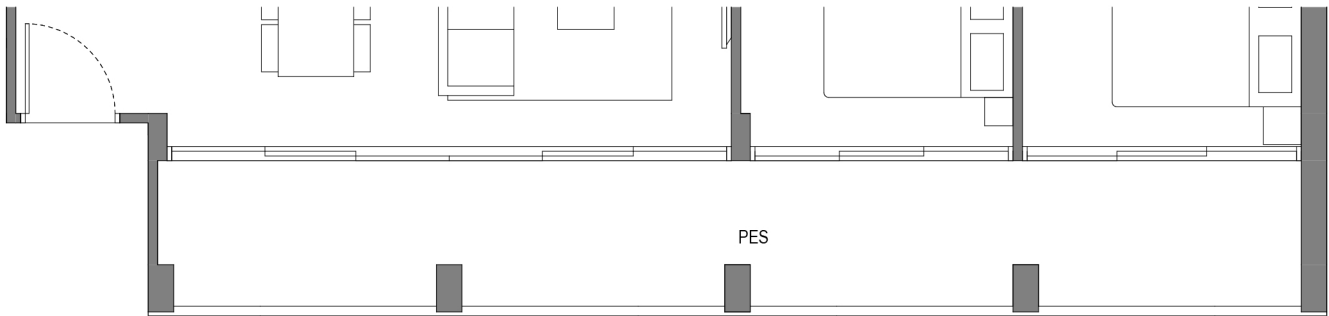
All plans are subjected to amendments as may be approved by the relevant authorities. Floor areas are approximate measurements and are subjected to final survey.
Building Plan CX ES No.: ES20250314-50002-CG01
Project Reference No.: A1709-A0050-2024
Dated: 18 July 2025

3 BEDROOM

TYPE CC2-G

117 sq m/ 1259 sq ft
INCLUSIVE OF 20 SQM PES

BLOCK	UNIT
821	#01-44*
	#01-45



TYPE CC2

117 sq m/ 1259 sq ft
INCLUSIVE OF 20 SQM BALCONY

BLOCK	UNIT
821	#02-44* TO #04-44*
	#02-45 TO #04-45

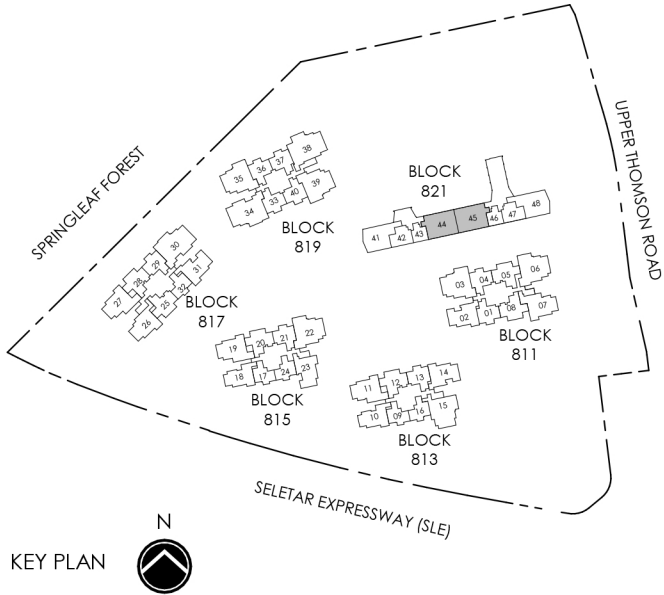
* MIRROR IMAGE



0 1 3 5m

LEGEND (where applicable) :

F - Fridge	WD - Washer Dryer
GH - Gas Hob	DB - Distribution Board
O - Oven	ST - Store



All plans are subjected to amendments as may be approved by the relevant authorities. Floor areas are approximate measurements and are subjected to final survey.
Building Plan CX ES No.: ES20250314-50002-CG01
Project Reference No.: A1709-A0050-2024
Dated: 18 July 2025